



Forward Edge Certified Coach Program

Virtual Learning Cohorts
for Instructional and
Technology Coaches

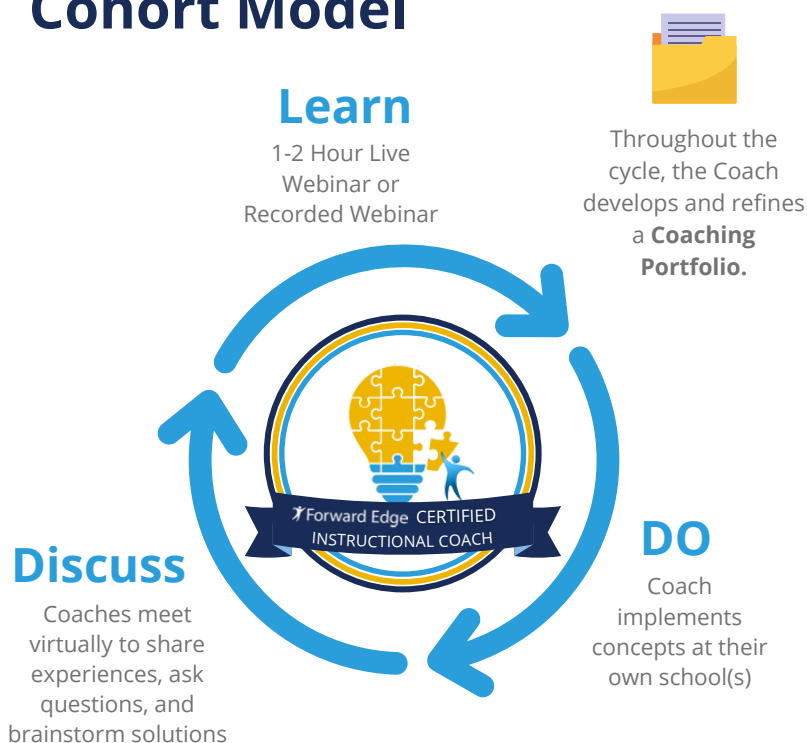
Program Description

The Forward Edge Certified Coach Program is a collaborative cohort-style learning experience created to meet the unique needs of instructional and technology coaches.

This program was designed for coaches, by coaches, to equip individuals in coaching roles with the skills and network necessary to achieve sustainable change in instruction and district-wide shifts in the culture of professional learning.

Join the next cohort and amplify your impact!

Cohort Model



Program Outcomes

Forward Edge Certified Coaches...

- Have a **clear understanding of their role** as an instructional or technology coach.
- **Think systematically** about the role their coaching program plays in larger district goals and initiatives.
- Are prepared to incorporate **formal coaching cycles** into their coaching program.
- Create and market **professional learning experiences founded in andragogical best practices** that are personalized, memorable, and lead to classroom implementation.
- Possess a strong skill set for **building relationships** and **deepening coaching conversations** with educators.
- **Utilize data** to make informed decisions about their work as a coach and the needs of educators they support
- Approach technology integration from a **learning objective first mindset**.

Program Agenda

Month 1

Program Orientation

Topic #1: What is a Coach?

- Achieving role clarity
- Essential role functions

Month 2

Topic #2: Systemic Coaching

- Supporting strategic goals
- Establishing effective coaching systems

Topic #3: Data-Informed Coaching

- Collecting & managing coaching data
- Data decisions & advocacy

Month 3

Topic #4: Coaching Cycles

- Coaching cycle models & frameworks
- Aligning cycles to strategic goals
- Goal-setting with educators
- Job-embedded coaching cycle practices
- Guiding reflection

Month 4

Topic #5: Professional Learning

- Andragogical-minded professional learning
- Planning, executing, & assessing effective professional development

Topic #6: Differentiation for Coaches

- Variances in adult learners
- Practical methods for differentiating professional learning

Month 5

Topic #7: Backward EdTech

- Understanding & modeling purposeful technology integration

Topic #8: Marketing Coaching Support

- Transitioning from “optional” to “critical” instructional support
- Connecting to intrinsic motivators

Who Should Participate?

This program is best suited for individuals who are actively serving in instructional or technology coaching roles. Teachers transitioning to a coaching role can participate, but may find meeting times in conflict with their teaching schedule.

“This program is an opportunity to not only increase my knowledge in the field of instructional coaching but also to increase my ability to help others, especially students.”

–Georgia Instructional Coaching
Cohort Member 2023

Program Includes

- 9 hours of facilitated learning
- 5 hours of collaborative discussion
- Earn 1 Ashland Credit
- Forward Edge Certified Coach badge
(upon fulfilling program requirements)



Participant Testimonials

"This coaching program was invaluable and will positively impact my teaching and coaching for years to come!"

-Nicholas Johnson

"I loved the connections and learning topics in this certification course. The format of learning and discussing was excellent. I was able to complete parts of my portfolio after each session."

-Lisa Meneghin

"I have learned so much about what it means to be a coach and how to implement a successful coaching program. I enjoyed the virtual format and the flexibility of having some recorded sessions and some mandatory collaborative sessions."

-Kate Krolczyk

"I absolutely loved taking part in the Certified Coach Program. I definitely see the benefit it will provide at the school I work at and can't wait to incorporate it."

-Jennifer Papp

Registration & Pricing

Reach out to coachingprograms@forward-edge.net for pricing and to set up a cohort.